

<b>LOCK BOLTS &amp; COLLARS .....</b>	<b>11-1</b>
<b>CAMTAINERS, MONO BOLTS, &amp; POP RIVETS .....</b>	<b>11-2</b>
<b>BUCK RIVETS .....</b>	<b>11-3 TO 11-4</b>
<b>FLOOR SCREWS .....</b>	<b>11-4</b>
<b>NYLON RIVETS &amp; MISCELLANEOUS .....</b>	<b>11-5</b>

## LOCK BOLT PINS



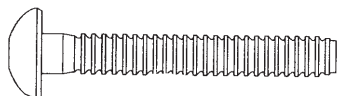
Part No.	Dia.	Grip Range	Cross Reference
50-B18P-24C	1/4"	3/16" - 5/16"	C6LB-R8-4G
50-B18P-26C		5/16" - 7/16"	C6LB-R8-6G
50-B18P-74C	3/8"	1/8" - 3/8"	C6LB-R12-4G
50-B18P-76C		1/4" - 1/2"	C6LB-R12-6G
50-B18P-78C		3/8" - 5/8"	C6LB-R12-8G

## LOCK BOLT COLLARS



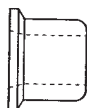
Part No.	Dia.	Cross Reference
50-B18K-2C	1/4"	2LC-R8G
50-B18K-3C	5/16"	2LC-R10G
50-B18K-4C	3/8"	2LC-R12G

## MAGNA-GRIP LOCK BOLT PINS



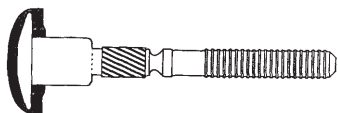
Part No.	Dia.	Grip Range	Head Style	Cross Reference
50-B18Q-7	1/4"	1/8" - 3/4"	Button	MGPB-R8-10G
50-18Z-515		5/8" - 1-1/2"	Broad Truss	MGP30-R8-24G
50-B18Q-19	3/8"	1/16" - 5/8"	Button	MGPB-R12-14G
50-18Z-516		5/8" - 1-1/2"	Broad Truss	MGP30-R12-24G

## MAGNA-GRIP COLLARS



Part No.	Dia.	Cross Reference
50-B18K-45	1/4"	MGC-R8U
50-B18K-40	3/8"	MGC-R12U

## HUCKTAINER PINS (GRAY HEAD)



Part No.	Dia.	Grip Range	Cross Reference
50-18Z-553	3/8"	.937 - 1.062	HLPMPG-R12-16
50-18Z-552		1.062 - 1.187	HLPMPG-R12-18

## HUCKTAINER COLLARS



Part No.	Dia.	Head Dia.	Cross Reference
50-18Z-548	3/8"	0.63	HLPSC-R12
50-18Z-549		1.16	HLPS-R12

# Camtainers, Mono Bolts, Pop Rivets



11

## CAMTAINER I BOLTS



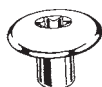
Part No.	Dia.	Length	Head Style	Head O.D.
CT-395-8149	5/16"	7/8"	Std Head	0.89
CT-395-8152		1"		

## CAMTAINER II BOLTS



Part No.	Dia.	Length	Head Style	Head O.D.	Head Color
CT-395-8166	5/16"	7/8"	Std Head	1.00	Gray
CT-395-8155					White

## CAMTAINER NUTS



Part No.	Dia.	Length	Head Style	Head O.D.	Torx Drive
CT-396-8006	5/16"	3/8"	Std Head	1.00	T55
CT-396-8002		1/2"			
CT-396-8003		5/8"			

## MONO BOLTS



Part No.	Dia.	Material	Grip Range	Cross Reference
700-50-28	1/4"	Aluminum	.080 - .375	BAPV 86
700-50-29			.350 - .625	BAPV 810
700-50-30		Steel	.080 - .375	SSPV 86
700-50-31			.350 - .625	SSPV 810
50-18Z-487		Stainless Steel	.080 - .375	CCPV 86

## PROTRUDING HEAD "N" RIVETS (STEEL PIN)



Part No.	Dia.	Material	Grip Range	Cross Reference
700-50-21	1/4"	Steel	.251 - .375	SSP86
700-50-22			.376 - .500	SSP88
700-50-23			.626 - .750	SSP812
700-50-24			.876 - 1.00	SSP816

## LARGE FLANGE "N" RIVETS (STEEL PIN)



Part No.	Dia.	Material	Grip Range	Cross Reference
700-50-19	3/16"	Aluminum	.376 - .500	BSL68
700-50-20			.626 - .750	BSL612

## AVEX RIVETS (STEEL PIN)



Part No.	Dia.	Material	Grip Range	Cross Reference
700-50-44	3/16"	Aluminum	.062 - .250	1610-3722
700-50-49			.187 - .437	1610-3716

## 3/16" BRAZIER HEAD ALUMINUM (Hard Alloy 2117-T4)

Part No. - 5 Lbs	Part No. - 1 Lb.	Size	Approx Pcs Per Lb
50-18P-5	---	3/16" X 5/16"	576
50-18Z-260	50-18Z-260-PK	3/16" X 3/8"	523
50-18Z-261	50-18Z-261-PK	3/16" X 7/16"	480
50-18P-8	50-18P-8-PK	3/16" X 1/2"	443
50-18P-9	---	3/16" X 9/16"	411
50-18P-10	50-18P-10-PK	3/16" X 5/8"	384
50-18P-12	---	3/16" X 3/4"	338



## 3/16" BRAZIER HEAD ALUMINUM (Soft Alloy 1100F)

Part No. - 5 Lbs	Part No. - 1 Lb.	Size	Approx Pcs Per Lb
700-50-56	700-50-56-PK	3/16" X 3/8"	523
700-50-57	700-50-57-PK	3/16" X 7/16"	480
700-50-58	700-50-58-PK	3/16" X 1/2"	443
700-50-60	---	3/16" X 5/8"	384

## 3/16" BRAZIER HEAD STAINLESS STEEL

Part No. - 1 Lb.	Size	Approx Pcs Per Lb
50-18U-3S	3/16" X 3/8"	196

## 3/16" UNIVERSAL HEAD ALUMINUM (Hard Alloy 2117-T4)

700-50-37	---	3/16" X 3/8"	633
700-50-38	---	3/16" X 7/16"	571
700-50-39	---	3/16" X 1/2"	521
700-50-40	---	3/16" X 5/8"	441



## 1/4" BRAZIER HEAD ALUMINUM (Hard Alloy 2117-T4)

Part No. - 5 Lbs	Part No. - 1 Lb.	Size	Approx Pcs Per Lb
50-18P-19	---	1/4" X 3/8"	257
50-18P-20	---	1/4" X 7/16"	238
50-18P-21	50-18P-21-PK	1/4" X 1/2"	222
50-18P-22	---	1/4" X 9/16"	207
50-18P-23	50-18P-23-PK	1/4" X 5/8"	195
50-18P-25	50-18P-25-PK	1/4" X 3/4"	174



# Buck Rivets

11

## 1/4" MODIFIED BRAZIER HEAD ALUMINUM (Hard Alloy 2117-T4)



Part No. - 5 Lbs	Part No. - 1 Lb.	Size	Approx Pcs Per Lb
50-18M-19	---	1/4" X 3/8"	369
50-18M-20	---	1/4" X 7/16"	331
50-18M-21	50-18M-21-PK	1/4" X 1/2"	300
50-18M-22	---	1/4" X 9/16"	274
50-18M-23	50-18M-23-PK	1/4" X 5/8"	253
50-18M-25	---	1/4" X 3/4"	218

## 5/16" MODIFIED BRAZIER HEAD ALUMINUM (Hard Alloy 2117-T4)



Part No. - 5 Lbs	Part No. - 1 Lb.	Size	Approx Pcs Per Lb
50-18M-45	---	5/16" X 1/2"	169

## 5/16" MODIFIED BRAZIER HEAD STEEL

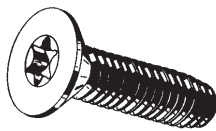
Part No. - Each	Size
50-18T-47C	5/16" x 5/8"

## 3/8" UNIVERSAL HEAD ALUMINUM (Hard Alloy 2117-T4)



Part No. - 5 Lbs	Part No. - 1 Lb.	Size	Approx Pcs Per Lb
50-18Z-507-10	---	3/8" X 5/8"	92
50-18Z-507-12	50-18Z-507-12-PK	3/8" X 3/4"	81
50-18Z-507-14	50-18Z-507-14-PK	3/8" X 7/8"	73

## Floor Screws



### TORX FLAT HEAD "TAP FORM"

Part No.	Size	Box Quantity
700-50-61	1/4"-20 X 1-1/2"	2000
50-19X-226	1/4"-20 X 2"	
50-19X-227	1/4"-20 X 2-1/2"	1000
50-19X-228	1/4"-20 X 3"	
50-19X-231	5/16"-18 X 2"	
50-19X-232	5/16"-18 X 2-1/2"	

### TORX FLAT HEAD "TYPE F"

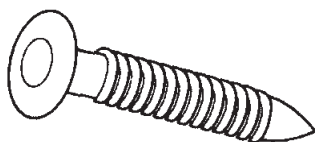
Part No.	Size	Box Quantity
50-19X-163P-32	1/4"-20 X 4"	1500
50-19X-163P-40	1/4"-20 X 5"	1000
50-19X-163P-48	1/4"-20 X 6"	

## NYLON TAPITS TRUSS HEAD



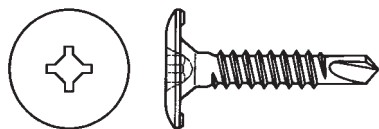
Part No.	Diameter	Length
50-D18A-2	1/4"	3/4"
50-D18A-1		1"
50-D18A-19		1-1/2"
50-D18A-10		2"
50-D18A-20		3"

## NYLON UNI-TAP



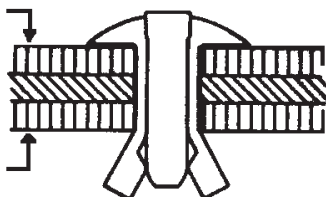
Part No.	Diameter	Length
50-D18A-34	1/4"	1"
50-D18A-36		1-5/8"

## EZ-IN / EZ-OUT FASTENERS



Part No.	Size	Application
700-50-50	#10 X 3/4"	Plywood
700-50-51	#10 X 1"	
700-50-52	#10 X 1-1/4"	
700-50-53	#12 X 1-1/4" Black	Scuff

Grip Range  
.275 - .375



## 3/16" Plywood Drive Rivet (Aluminum)

50-C18J-3

Grip Range .275 - .375  
Southco 11-13-706-13  
Cherry 4145-6-375